

SPECIFICATIONS

Modular Jack

Mechanical

Mating Force: 4 Pounds Max.
Unmating Force: 4 Pounds Max.
Durability: 1000 Cycles

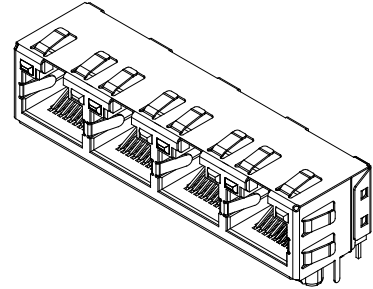
Electrical

Current Rating: 1.5A Max.
Voltage Rating: 150 VAC
Dielectric Withstanding Voltage: 1000V Contact To Contact
1500V Contact To Shield

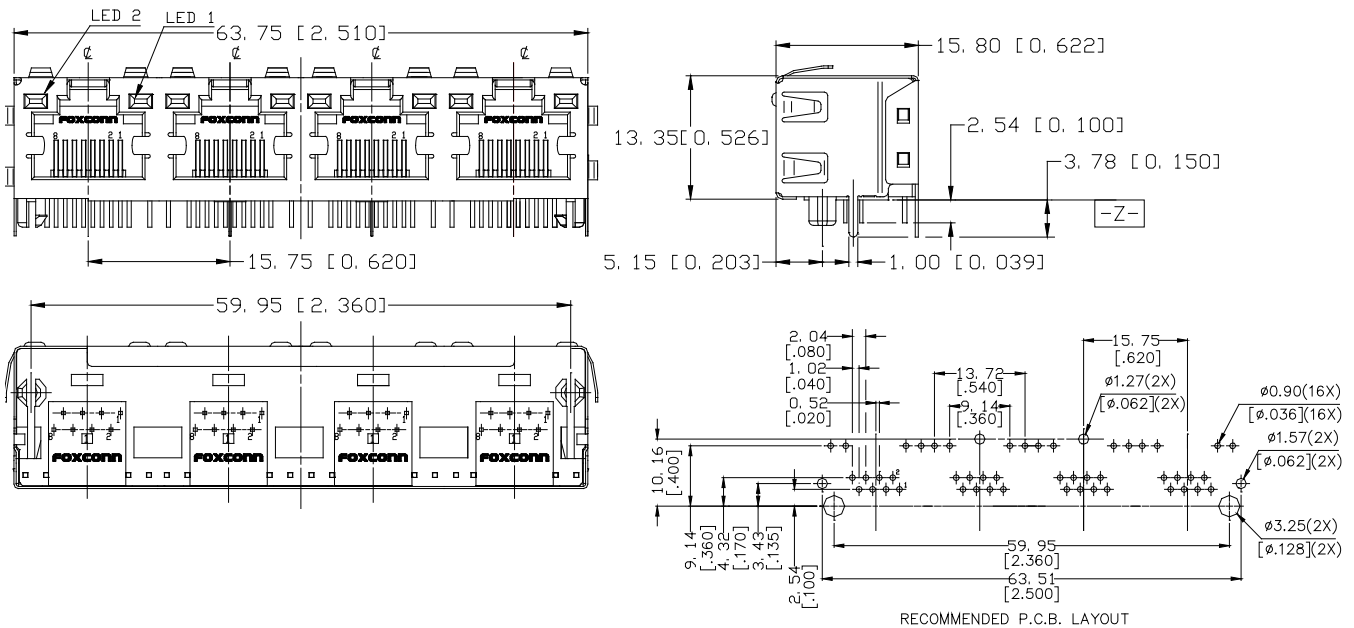
Physical

Housing: Thermoplastic, UL 94V-0 Rated In Black Color
Contact: Copper Alloy
Shell: Copper Alloy
Operating Temperature: 0°C To +70°C

JM Series
RJ45 T/H CONNECTOR
R/A, T/U Type
1.02mm [.040"] Pitch



DRAWING



ORDERING INFORMATION

PRODUCT NO.: JM 3 7 1 4 5 - LT1F - 4 F

- JM = SERIES PREFIX
- 3 = BODY & TERMINATION (R/A, ALL SHIELD, T/H)
- 7 = DESIGN TYPE (W/ TOP & SIDE PANEL-GND W/B/L)
- 1 = POSITION TYPE (RJ45 8P8C)
- 4 = NO. OF PORT (4 PORT)
- 5 = GOLD PLATING THICKNESS (50 u")
- LT1F = EXTENSION DODE (YELLOW LED AND GREEN LED)
- 4 = SOFT TRAY
- F = LEAD FREE

P/N	LED 2	LED 1
	9 φ 10 YELLOW 	11 φ 12 GREEN